

Library Zones *by category*

SILENT

- No conversation
- No cell phone use

QUIET

- Brief, quiet conversations; keep noise to a minimum
- No cell phone use

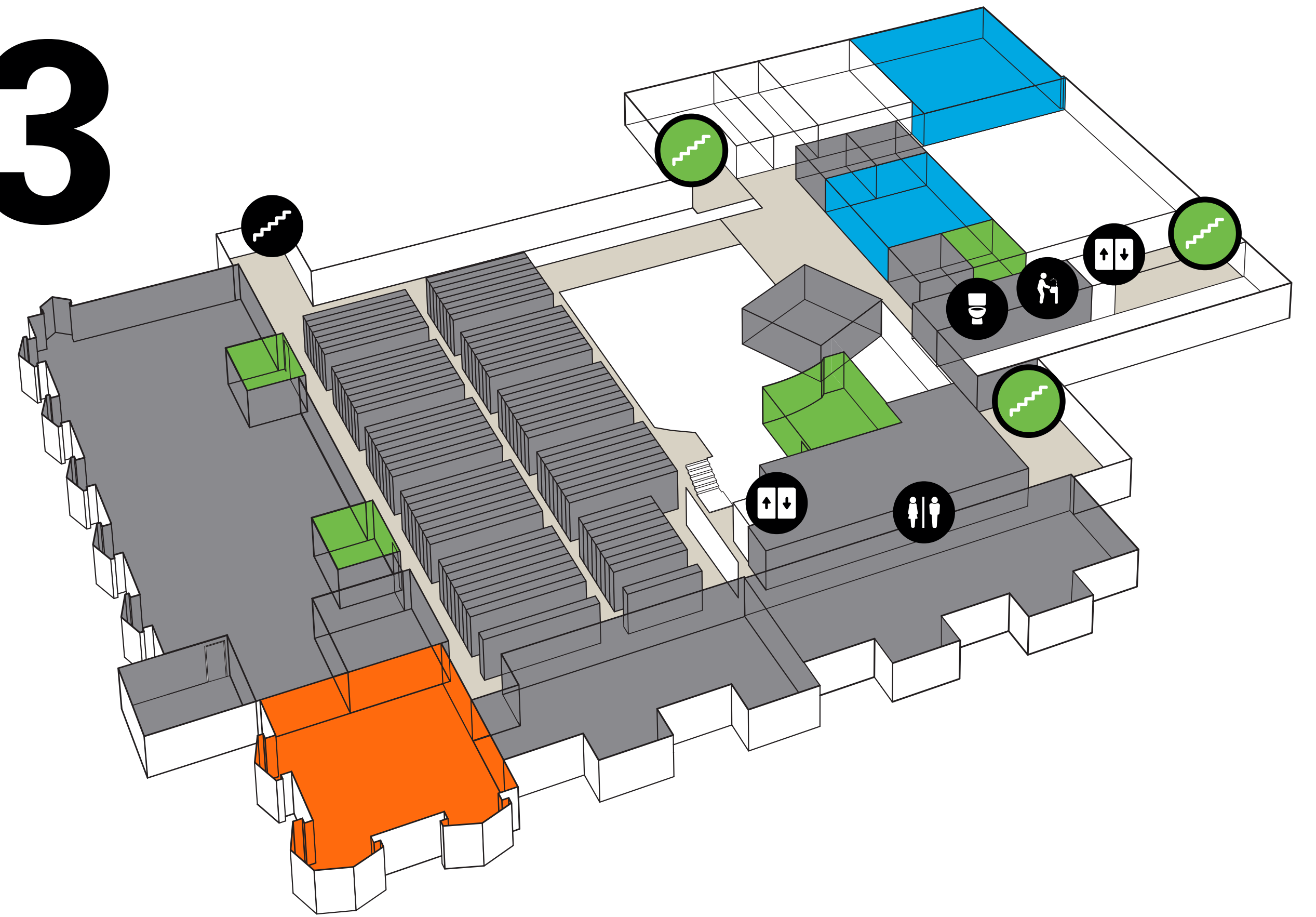
ACTIVE

- Brief conversations
- No cell phone use
- Library transactions at service desks

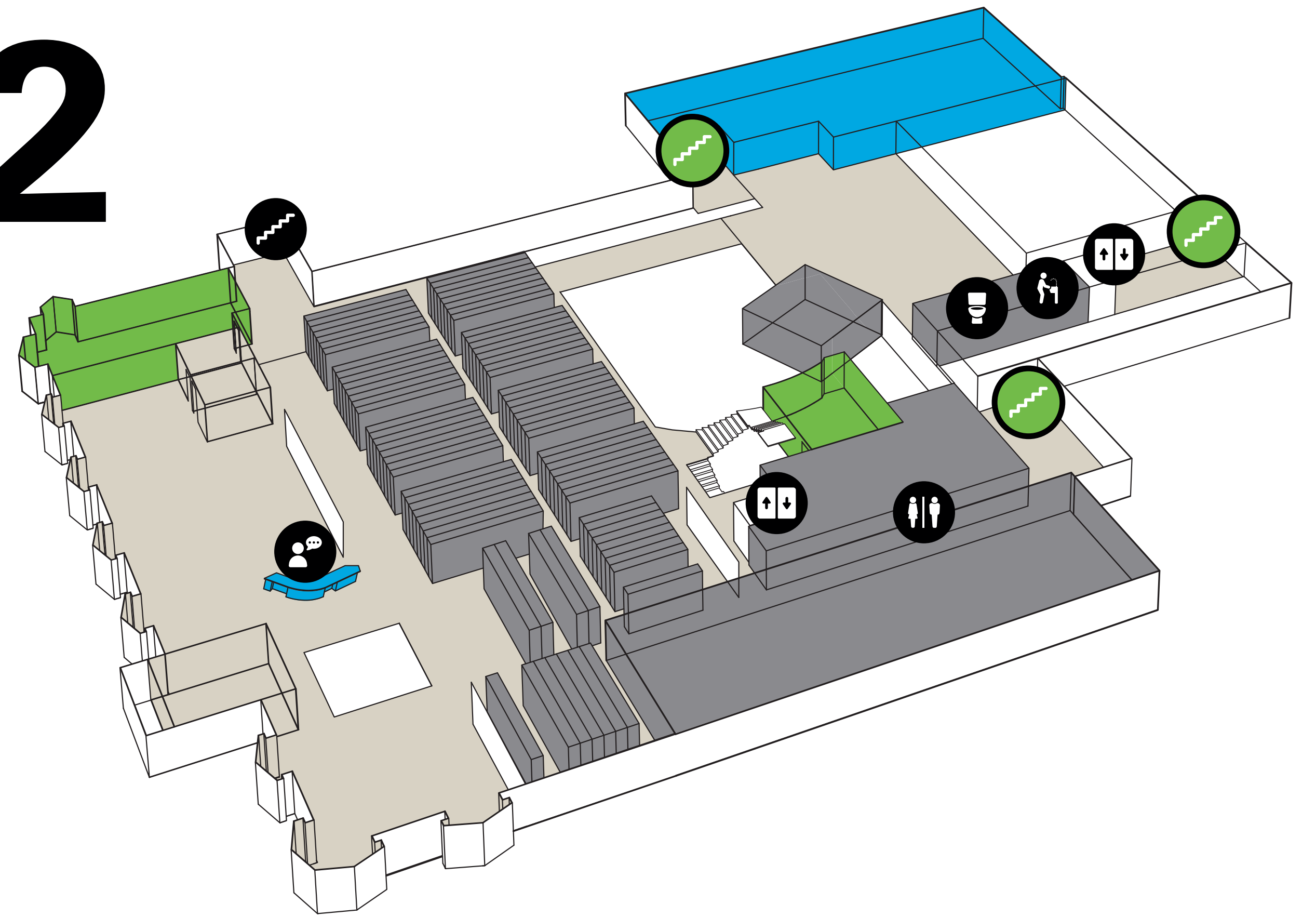
COLLABORATIVE

- Extended conversations
- Cell phone use
- Group meetings

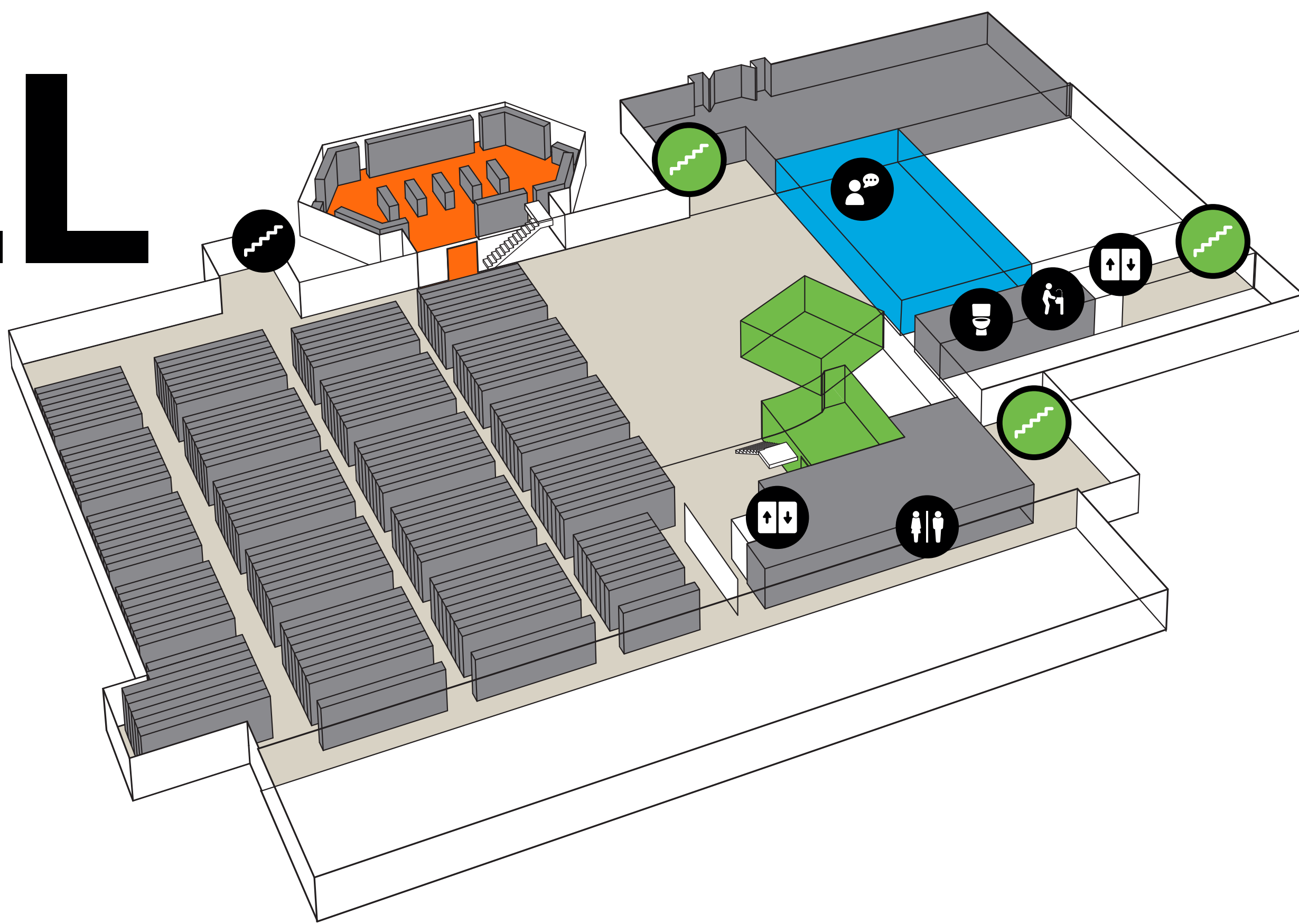
3



2



LL



1

